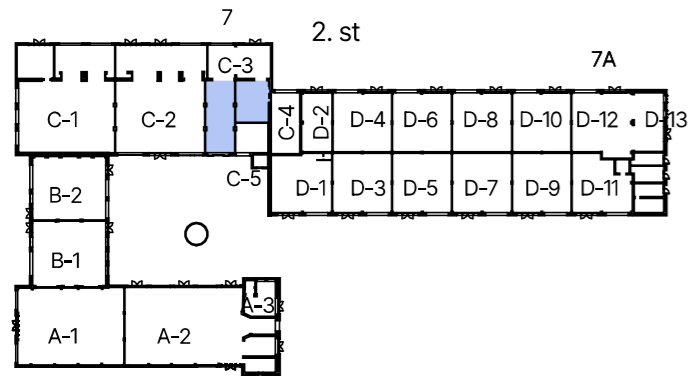


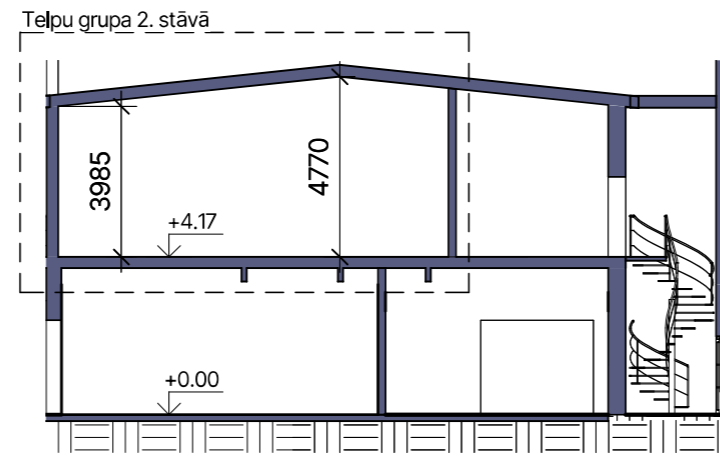
URBAN STOCK

KORPUSS 7 NOMAS TELPAS NR. C-5

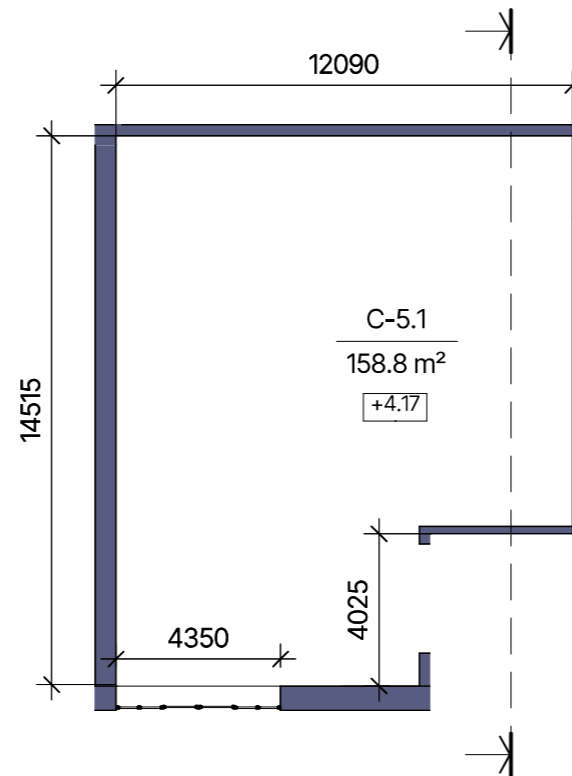


NOVIETNES SHĒMA (2. stāvā)

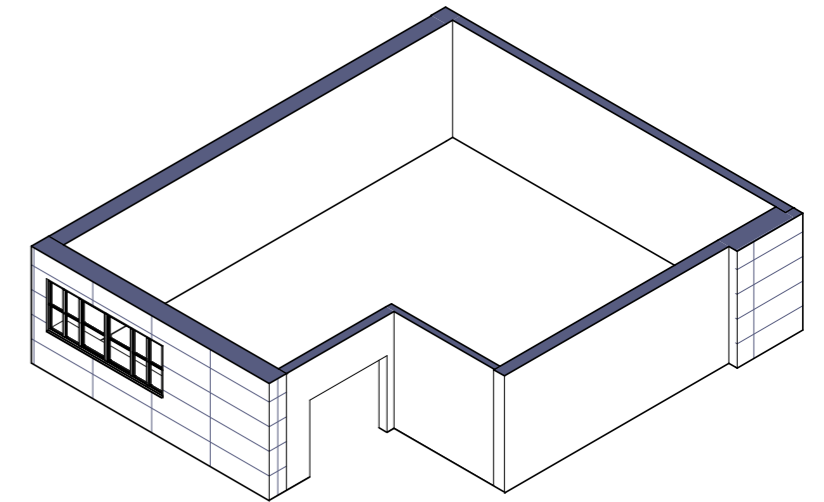
| NOMAS TELPU NR. C-5 EKSPLIKĀCIJA | | |
|----------------------------------|-------------|------------------------|
| Telpas Nr. | Nosaukums | Platība m ² |
| 2.stāvs | | |
| C-5.1 | Nomas telpa | 158.8 m ² |
| | | 158.8 m ² |
| KOPĀ: | | 158.8 m ² |



GRIEZUMS



2. STĀVA PLĀNS



2. STĀVS